

New Women's Support Group - Express Your Interest Now

Empower Autism's Women's Group is designed for Autistic Women and non-binary individuals 18 – 30 years, who want to connect and build their Autistic community.

Our group details:

- 2nd and 4th Tuesday of each month
- From 6:15pm to 7:15pm
- Zoom meeting details emailed out to registered participants prior to event.



Express Your Interest



Youth Groups

Youth Groups are designed for young autistic people aged from 14 years to 18 years.

[learn more](#)



Young Adults Groups

Young Adult Groups are for young autistic adults aged from 18 years to 30 years.

[learn more](#)



Parent Groups

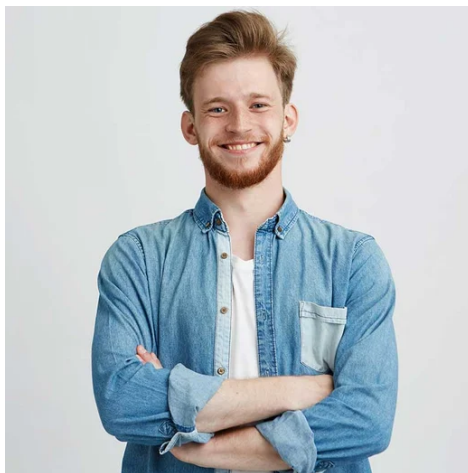
Parent Groups are run simultaneously with Youth Groups.

[learn more](#)

Check out our Life Skills Programs !!!

Register your interest now to find out more

Introductory Life Skills



Find Out More

Advanced Life Skills



Find Out More

We're Excited to Welcome Carers QLD to the Empower Autism Community

The partnership between Empower Autism and Carers Queensland is a natural fit. As organisations we have similar values combined with a shared mutual respect.

Importantly our services and programs are complimentary and this provides unique opportunities for collaboration across a range of areas [Find out more](#)



**Empower
Autism**

Enabling positive social change
for and with autistic people



Our School Pack Is Here

School Leaver Employment Support (SLES)

Exciting news! Empower Autism is planning the development of a unique SLES (School Leaver Employment Support) program specifically for autistic young people. This program will be designed to empower autistic students in their transition from school to work. We're looking to launch this program in early 2023, so please stay in touch if you have autistic students who would benefit from this support next year.

For more information, please email office@empowerautism.org.au or call the office between 9 AM and 3 PM Monday to Friday on (07) 3865 2911 to get our School Pack mailed to you.

You can also learn more about Empower and sign up for our mailing list at www.empowerautism.org.au.

A Message From the CEO

It's hard to believe we're past the half way mark for 2022 and into another financial year. My first thoughts when I sat down to write this message was - where has the past 6 months gone? It seems only a few weeks since I was drafting a message for our Christmas newsletter last year. As I reflected on what has been achieved at Empower Autism since that December newsletter, I was reminded of the saying 'time flies when you're having fun'! The 'fun' for the incredible team of people that I work with at Empower Autism – which includes our Board, Staff and Volunteers – has been reflected in the following achievements:

- Rebranding to Empower Autism – Whilst we had a long and proud history of trading as Asperger Services, we felt it was important, as an organisation that supports autistic people, that we remain relevant, inclusive, and recognisable in today's market. I'm really grateful for the exceptional work put in by our marketing team (a very small but hardworking and talented team!) in designing our new branding and bringing this to fruition. The enormous amount of positive feedback we've received reassures me we made the right choice with our new brand. Personally I love the tag line 'enabling positive social change for and with autistic people' as I feel it aptly sums up what we're trying to achieve.
- Partnering with Amaze to launch Autism Connect in Queensland – I'm particularly proud an organisation with the integrity, history and credibility of Amaze chose Empower Autism to be their Queensland partner in delivering such an amazing service for the autistic community. This partnership was the culmination of 12 months of collaboration and has provided us with a huge increase in capacity and knowledge as well as three amazing Advisors joining our team. Read more about Autism Connect later in this newsletter – the stats are really impressive and show how much this service is needed and how many autistic people it's impacting.
- Launching our Advanced Life Skills program – this program was designed by a proudly autistic school teacher who also has qualifications in creative writing and an intuitive understanding of autism. We're exceptionally fortunate to have such an amazing designer working with our team and the pilot program received great feedback. The program includes modules on Living Arrangements, Responsible Citizenship, Positive Relationships and Wellbeing. Our next program commences in October – visit our website for details [Advanced Life Skills Program - Empower Autism](#)
- Partnering with Carers Queensland – this partnership was formed on shared values, mutual trust, key synergies and a genuine desire to collaborate for the mutual benefit of the participants of both organisations. Carers Queensland have provided much needed support and information to our parents and are playing a key role in the accreditation and delivery of our life skills programs. We're looking forward to working with the incredible team from Carers Queensland into the future.

- Launching our Peer Mentoring Program – a huge amount of research, thought, work and discussion went into the design of this unique program which partners autistic mentors with autistic mentees and we believe it will be incredibly beneficial and impactful. I'm really proud of our team members who pulled this together and so grateful to our volunteer Program Reference Group members who gave us their open, honest and inciteful input and feedback. If you'd like to be involved in this program, as a mentor or a mentee, we'd love to hear from you.

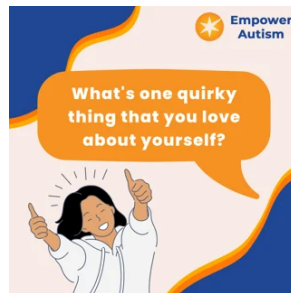
I'd also like to share with you some of the initiatives the team is working on that you'll see come to life in the next few months. Firstly the many positive impacts participants report experiencing from attending our Peer Support Groups has given us the incentive to expand on these. I know our team are excited about the upcoming launch of our Women's Peer Support Group in July and we're also looking at sites across Brisbane to expand our Youth and Parent Groups. Our talented program designer and other team members have also been busy working on an Employment Readiness program which we're aiming to pilot in September – keep an eye on our website for details [Programs - Empower Autism](#). We're also keen to engage with local employers to highlight the benefits autistic employees can bring to their workplace and work with them to develop an understanding of the needs of autistic people in the workplace. The benefits of employment are immeasurable (from providing purpose, through experiencing being part of a team to confidence, self-esteem and independence) whilst the unemployment and underemployment issues which are common for autistic people need to be addressed. I'm confident I'll have a lot more to tell you about this in our next newsletter!

I'd like to sum up by acknowledging the contribution of our staff and volunteers. I'm very fortunate to work with a team of dedicated staff who genuinely have the best interests of the autistic community at heart and who work tirelessly to achieve Empower Autism's vision and mission. Our team of 10 includes 2 staff who identify as autistic, whilst another 6 of us have lived experience through autistic family members. I can't speak highly enough of our team of volunteers, who generously contribute their time, experience and skills. This team has doubled in size over the past 15 months and I'm really proud to say that over 40% of our volunteers identify as autistic.

Sincerely,
Tom Moss



Exciting News !!! @empowerautismqld



Have questions? you can email Empower at office@empowerautism.org.au



Empower Autism congratulates Amaze on the 12-month anniversary of the National launch of Autism Connect! Amaze have done a brilliant job in bringing such an amazing and much needed service online and ensuring its accessibility and usability. The stats achieved in just 12 months show just how needed this service is, with over 1.8m page views and 62,000 Interactions from across Australia. However, even more impressive is how well the Autism Connect team have connected with the callers, achieving a 97% satisfaction rate of the services and supports provided". Empower Autism are truly proud to be one of 6 local partners, delivering Autism Connect for the Queensland autistic community.

We value the relationship we've developed with Amaze and look forward to working with them into the future.

Empower Autism, Unit 1, 16 Yarraman Place, Virginia, QLD 4014, Australia, 38652911

[Unsubscribe](#) [Manage preferences](#)